



# 2013 WISCONSIN TRANSITION CONFERENCE

Thursday, Feb. 21<sup>st</sup> / Friday, Feb. 22<sup>nd</sup>

*New Website Coming Soon!*

[www.educationevents.org](http://www.educationevents.org)

## INVITED KEYNOTES



Denise  
Bissonnette

**DENISE BISSONNETTE** is an internationally renowned writer, trainer and keynote speaker. For two decades, she has inspired people and organizations throughout North America to look beyond traditional concepts of job and career development and to craft livelihoods rooted in the individual genius of each person. She has authored several publications on creative job development, state of the art job search techniques, the cultivation of the human spirit, and how to “shine” on the job. With a style all her own, Denise’s work is a rich tapestry of her talents as a poet, writer, storyteller, teacher and career developer.

**ANINDYA (BAPIN) BHATTACHARYYA** was brought up in a village twenty miles south of Calcutta, India where the village was mostly farmland and forest. He was born deaf and lost his sight in two separate incidents after the age of eight. The schools for the blind in India would not accept him as they had no provisions for working with deaf students so he traveled to the United States to obtain an education. His issues with accommodations spurred him into action. Bapin holds a bachelor’s degree in political science from the University of Arkansas Little Rock and works full time as an adaptive technology instructor at the Helen Keller National Center (HKNC). It has always been Bapin’s goal to help other deaf-blind people in India and other countries to achieve their dreams to become successful people.



Anindya (Bapin)  
Bhattacharyya

### PRESENTER PROPOSALS

If you are interested in presenting at the 2013 Wisconsin Transition Conference, submit a presentation proposal online at [www.educationevents.org](http://www.educationevents.org) from August 15 through September 28, 2012.

### EXHIBITOR REGISTRATION

If you represent a non-profit or for profit agency, or are a person with a disability who operates a microenterprise and are interested in promoting your services or products, register for an exhibitor table at [www.educationevents.org](http://www.educationevents.org) by November 30, 2012.



Cooperative Educational Service Agency #11

**At the  
Kalahari Resort and Waterpark  
Wisconsin Dells, Wisconsin**





# 2013 INVITED SPEAKERS

**DR. PATTIE NOONAN** has been working in secondary special education/transition for over a decade and is currently an assistant research professor at the University of Kansas, Department of Special Education. Dr. Noonan focuses her efforts on large-scale evaluation of school reform and improvement efforts, developing and researching community transition teams at the state and local levels, and providing professional development for secondary special educators.



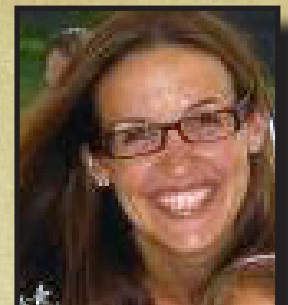
Dr. Pattie  
Noonan



Wendy  
Parent

**WENDY PARENT** is Research Professor and Assistant Director, Kansas University Center on Developmental Disabilities, a Center for Excellence in Developmental Disabilities, at the University of Kansas. She has more than twenty five years' experience in the areas of supported and customized employment and transition from school to work for individuals with severe disabilities with an emphasis on creative funding and support strategies, individual and family involvement, job coach training and leadership, interagency collaboration and service delivery issues, and systems change.

**STACIE DOJONOVIC** is a Transition Coordinator for Fox Chapel Area School District in Pittsburgh, Pennsylvania. She has fifteen years of experience helping school age youth with disabilities transition to adult life, coordinating community and school partnerships, developing jobs, providing job support and placement, conducting vocational evaluations, and developing both secondary and post-secondary curriculum. She has extensive experience in developing transition programs and assessment tools and protocols.



Stacie  
Dejonovic



Colleen  
Thoma

**DR. COLLEEN A. THOMA** is a Professor of Special Education in the Department of Special Education and Disability Policy at Virginia Commonwealth University. She has been conducting research on student self-determination for nearly twenty years, particularly focusing on strategies to facilitate student self-determination in transition planning, assessment, and instruction.

**DR. LARON A. SCOTT** earned his doctoral degree at Walden University, his masters degree at Virginia Commonwealth University (VCU), and is currently on the faculty at VCU where he is working on a grant project to improve the teacher preparation program in special education. His research interests include transition planning, student-directed individualized education program development, and special education teacher professional development. He is the recipient of the Division on Career Development and Transition, Transition Teacher of the Year award in 2008.



LaRon  
Scott